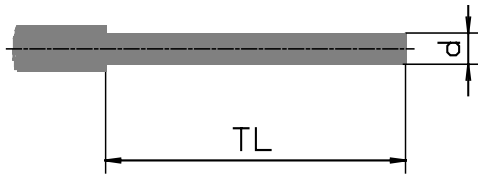
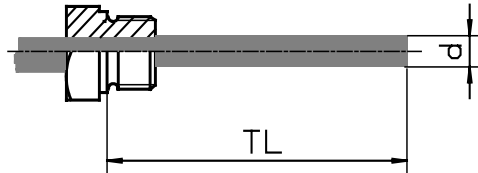


## Stem types for Gas thermometers with fixed stem connection



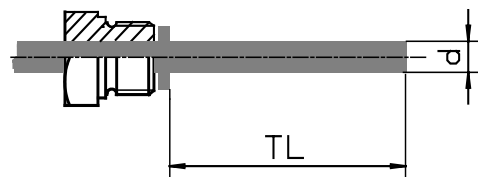
**Stem type F1**  
plain stem without thread



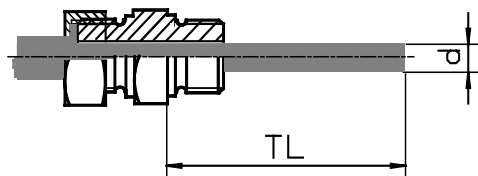
**Stem type F2**  
fixed thread connection



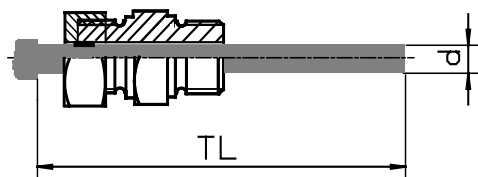
**Stem type F4**  
union nut



**Stem type F5**  
rotating thread  
only with extra thermowell



**Stem type F6**  
union nut with rotating thread



**Stem type F7**  
plain stem, smooth with clamping nut

| Stem type         | Minimum Stem length TL |     |     |                    |     |     |     |     |     |
|-------------------|------------------------|-----|-----|--------------------|-----|-----|-----|-----|-----|
|                   | F1, F5                 |     |     | F4, F4-1, F6, F7-1 |     |     | F7  |     |     |
| Stem diameter     | 12                     | 10  | 8   | 12                 | 10  | 8   | 12  | 10  | 8   |
| Temperature range |                        |     |     |                    |     |     |     |     |     |
| <500°C            | 40                     | 50  | 80  | 50                 | 60  | 90  | 70  | 80  | 105 |
| >500 °C           | 80                     | 110 | 170 | 90                 | 120 | 180 | 110 | 145 | 195 |