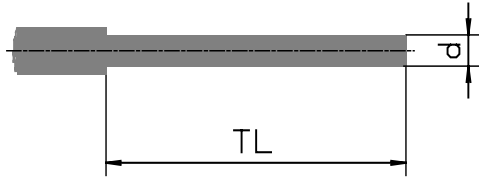
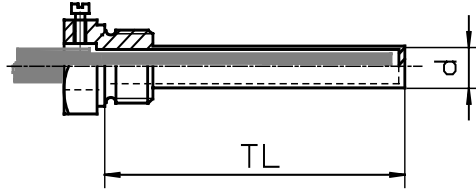


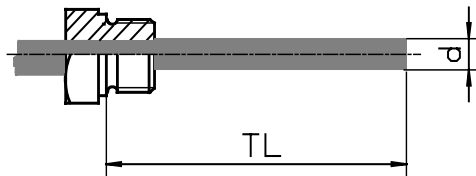
Stem types for Bimetal thermometers



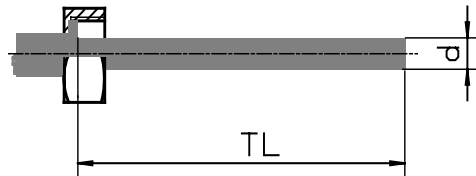
Stem type F 1
plain stem ,smooth with collar for thermowell
d = 8 mm



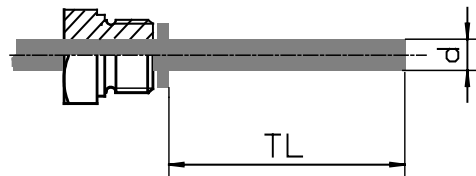
Stem type F 2
separate thermowell
with lateral screw
d = 12 mm



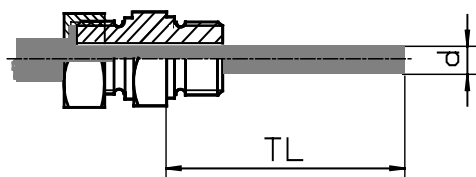
Stem type F 3
firm thread
d = 8 mm



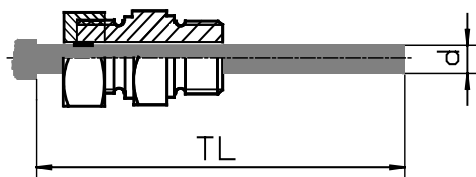
Stem type F 4
union nut
d = 8 mm



Stem type F 5
rotating thread
only with extra thermowell
d = 8 mm



Stem type F 6
union nut with rotating thread
d = 8 mm



Stem type F 7
plain stem, smooth with clamping nut
d = 8 mm