

Pressure Gauge Syphons

DIN 16 282 or industrial standard



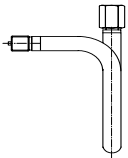
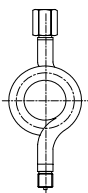
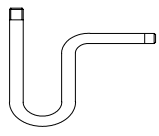
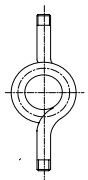
Application

Pressure gauge syphons are intended to protect the pressure gauge from the effect of hot pressure media and also to reduce the effect of rapid pressure surges.

Material

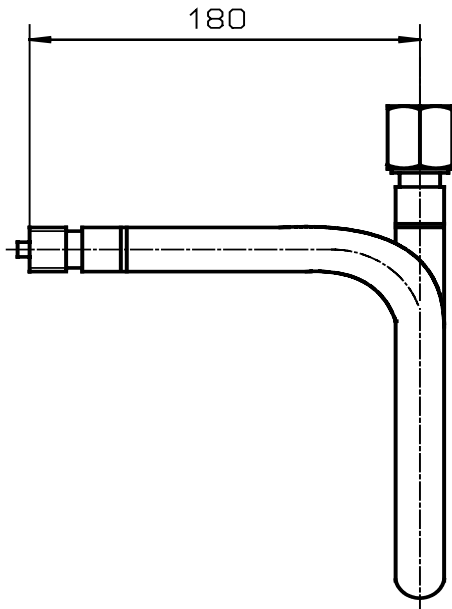
Carbon steel (St 33 or St 35.8)

Stainless steel (1.4571)

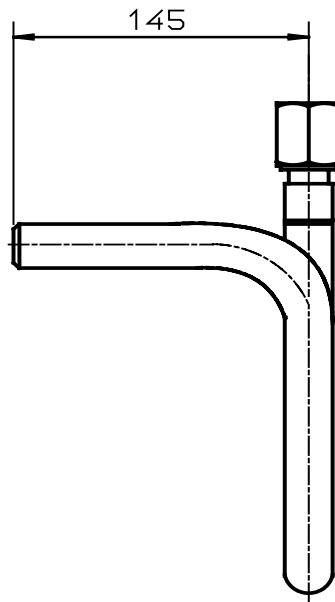
Design	Connection	Material	Max.PN in bar	Max. Temp. °C	Form	Article no.	
	U-Form A, with connecting thread 1/2" U-Form B, with entry butt welding						
	G 1/2	St 35.8	100	120 °C	A	ZW 102	
		stainless steel	80	300 °C	B	ZW 112	
						A	ZW 103
						B	ZW 113
	Trumpet form , with connecting thread 1/2" Trumpet form with , entry butt welding						
	G 1/2	St 35.8	100	120 °C	C	ZW 202	
		stainless steel	80	300 °C	D	ZW 212	
						C	ZW 203
						D	ZW 213
	U-Form,without sealingthread						
	G 1/2	St 33	25			ZW 302	
	Trumpet form , without sealingthread						
	G 1/2	St 33	25			ZW 402	

Dimensions

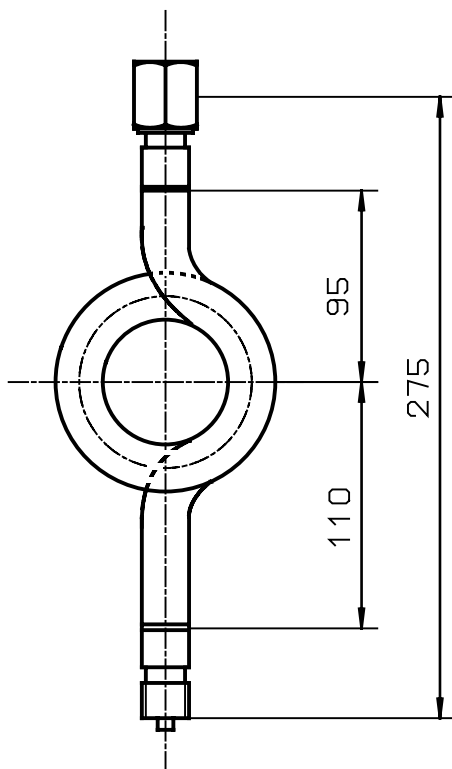
Form A



Form B



Form C



Form D

